

# TOUCH PANEL

## 電容主動筆

## Function Extension

Tail Eraser  
Bluetooth  
Air Mouse  
Gyro Sensor  
Color Capture

Tail Eraser • MP in 2017  
Bluetooth • MP in 2017  
Air Mouse • MP in 2017  
Tilt (Gyro) • MP in 2017  
Color Capture • Prototype in 2018  
Laser • Prototype in 2016

## Power

Li/4A Battery  
Super Cap  
Wireless charging

Li-ion Battery • MP in 2017  
Super Cap • MP in 2017  
4A Battery • MP in 2017  
Wireless Charging • MP in 2019

## Writing Performance

Control Unit  
Sleep Mode  
Transmit Circuit

Pressure Module  
Tip Structure  
2Tx + Rx  
Min Dia. 4.5-5.5mm

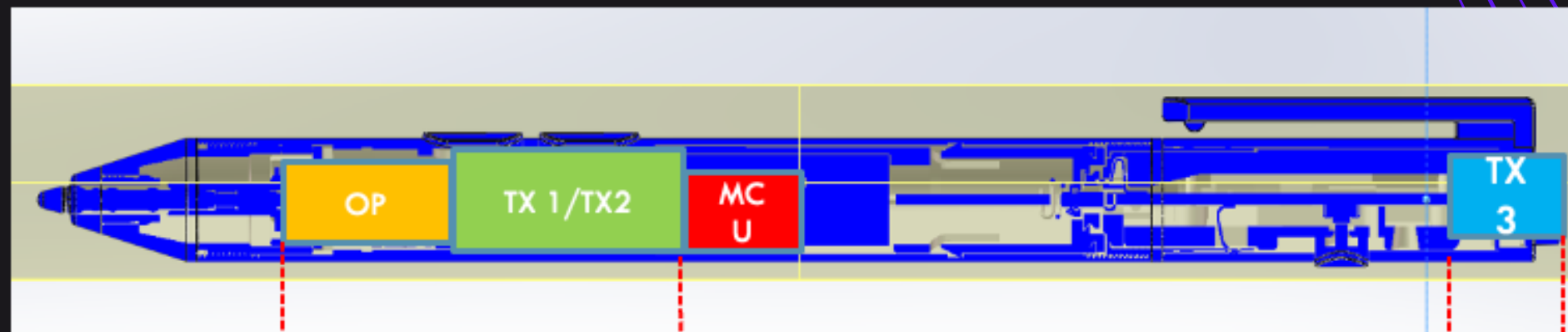
MCU solution • MP in 2018  
ASIC Solution • MP in 2019  
Pressure Module • MP in 2018  
Min Dia 4.5-5.5mm • Prototype in 2019

Remark: Min Dia. 4.5-5.5mm upon client's requirement

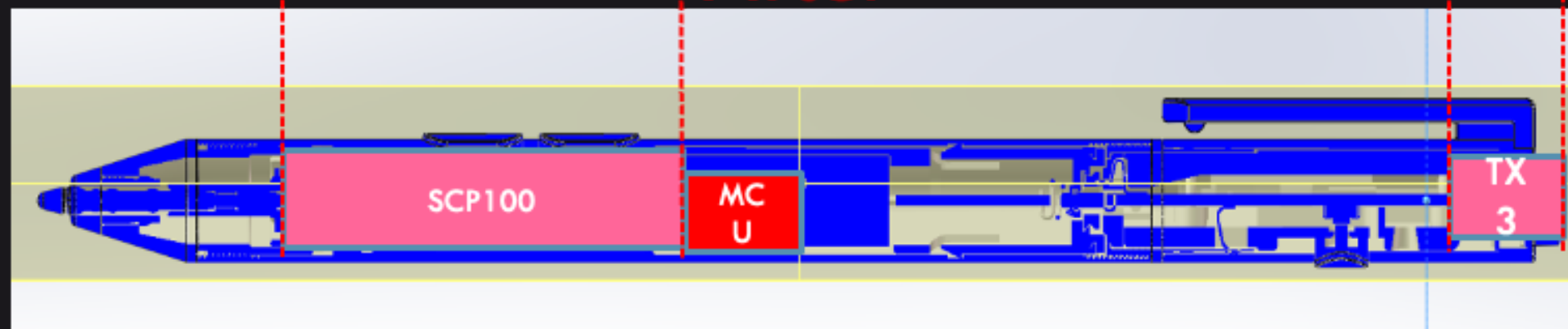


- Support 4096 Pressure Level
- Support 3 High Voltage Electrodes Signal Output
- Low Power Architecture
- Small Size

Before

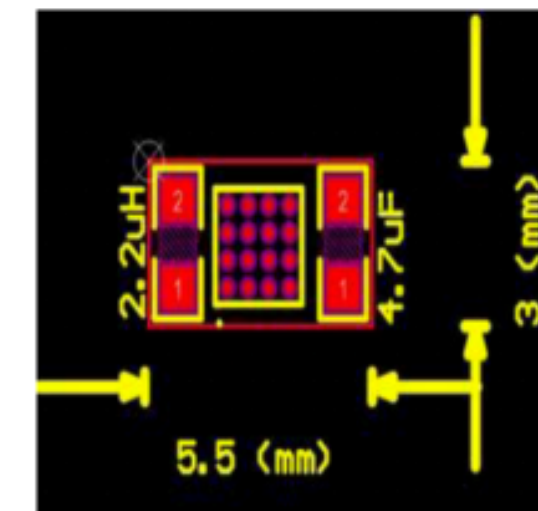


After

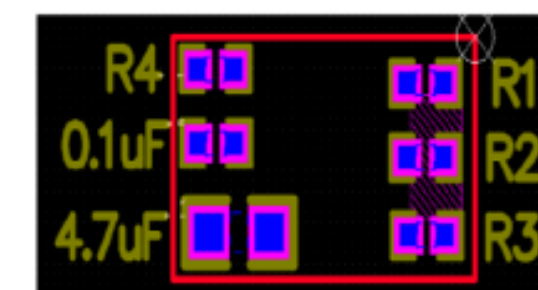


### Typical Component Placement

Top side



Bottom side



**Power:**  
Pogo pin charge  
Super Cap / Li-Battery

**Protocol:**  
MPP2.0 & MPP1.51  
USI  
SS Protocol

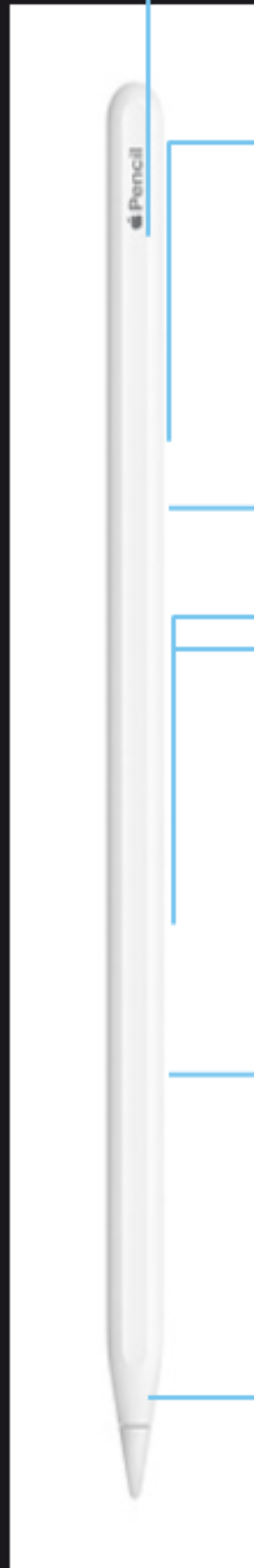
**Pressure Module & Antenna:**  
4096 Pressure Level  
2Tx / 1Tx & 1Rx



Total Length:  $120\text{mm} \pm 0.5\text{mm}$   
Pen Diameter:  $5.5\text{mm} \pm 0.05\text{mm}$   
Estimated Weight:  $10\text{g} \pm 2\text{g}$

Battery Life  
Super Cap: 15s Charge, 20-30Mins  
continuous use  
Li-Battery: longer than 24H

Enable to MP



More tail functions

Seamless design

Matte finish

Attach magnetically for pairing and charging

Change tools with double tap or slide where fingerrests

Longer battery life with lower power dissipation

In-cell solution\*

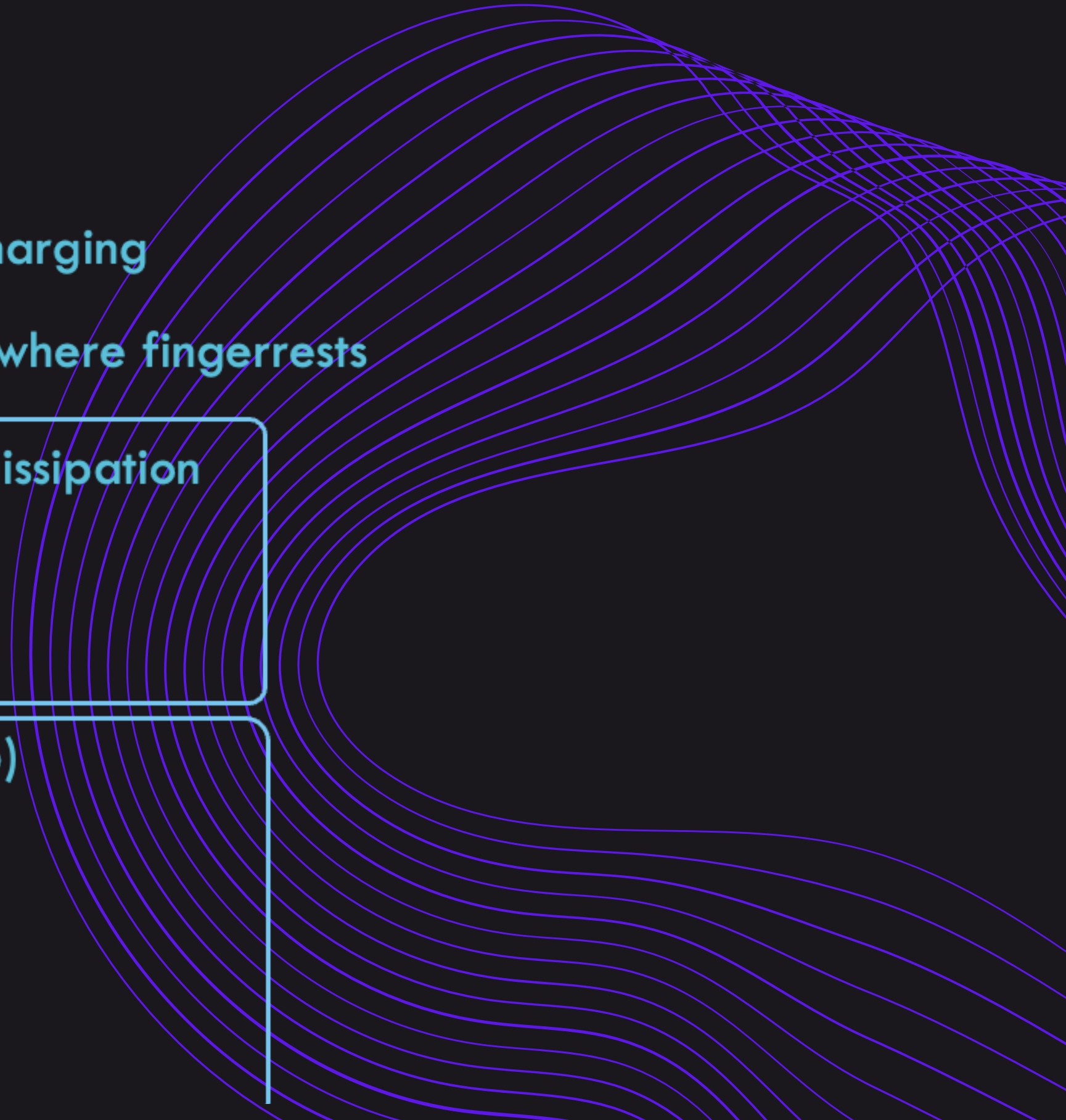
No latency, pixel-perfect precision

High pressure level (4096, max 65536)

Create shading simply by tilt

Lower initial force

Writing like a real pencil





“ 公司地址

台灣新北市汐止區新台五  
路一段75號9樓之2

“ 電話聯繫

+886-2-26981680

“ 電子郵件

Ada@shouhon.com.tw



Contact us